

MSCI Europe Value Tilt Index

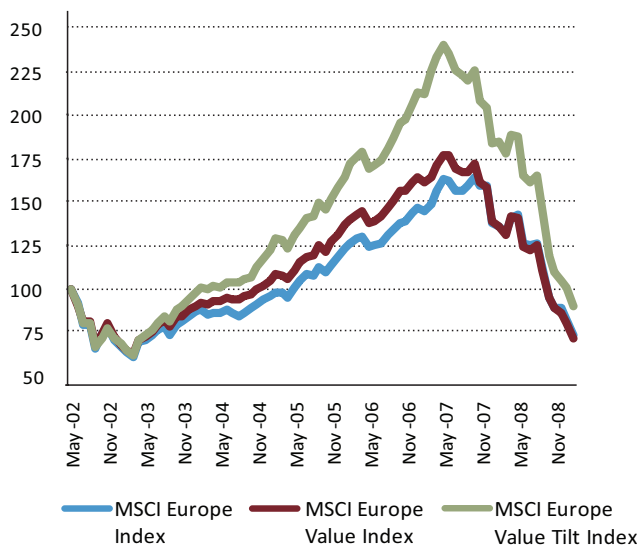
Based on MSCI Europe and constructed to maximize exposure to the Barra Value Factor

The MSCI Europe Value Tilt Index is constructed from the MSCI Europe Index, and is designed to have high exposure to the Barra Value Factor. This long-only index is constructed using an optimization process that, based on specified constraints, aims to maximize exposure to a single factor while controlling exposure to other factors and minimizing active risk (tracking error) relative to the MSCI Europe Index. "Value" is defined in the Barra EUE2 Risk Model as a factor that aims to capture "the extent to which a company's ongoing business is inexpensively priced in the marketplace", and has historically been an important driver of risk and performance in the European equity markets.

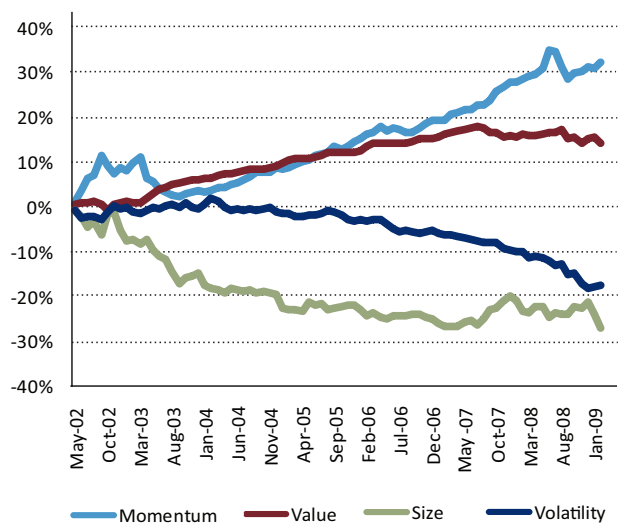
Traditional style indices, such as the MSCI Europe Value Index, identify value stocks based on stock level fundamental data; however a traditional style index will also be exposed to other factors (e.g., Size) and sectors (e.g., Financials). Using a risk model and an optimization process with specified constraints allows the MSCI Europe Value Tilt Index to maximize its exposure to the target factor while maintaining a risk profile similar to the underlying MSCI Europe Index.

The MSCI Europe Value Tilt Index is designed to support investment managers in the portfolio analysis and portfolio construction processes, and may also be licensed as the basis of index-linked investment vehicles such as structured products and ETFs.

Historical Index Performance



Historical Cumulative Return of Main Barra Factors in the Barra EUE2 Risk Model



CONTACT US

Americas
1.888.588.4567
Amsterdam
+31.20.462.1382
Atlanta
+1.404.551.3212
Boston
+1.617.532.0920
Cape Town
+27.21.673.0100
China Netcom
10800.852.1032
China Telecom
10800.152.1032
Chicago
+1.312.675.0545
Frankfurt
+49.69.133.859.00
Geneva
+41.22.817.9000
Hong Kong
+852.2844.9333
London
+44.20.7618.2222
Madrid
+34.91.700.7275
Milan
+39.02.5849.0415
Montreal
+1.514.847.7506
New York
+1.212.804.3901
Paris
0800.91.59.17
San Francisco
+1.415.576.2323
São Paulo
+55.11.3706.1360
Singapore
+65.6834.6777
Sydney
+61.2.9033.9333
Tokyo
+813.5226.8222
Toronto
+1.416.628.1007
Zurich
+41.44.220.9300

Frequency

- The MSCI Europe Value Tilt Index is calculated as a price index in EUR in real time and disseminated every 15 seconds during market trading hours.
- The index is also calculated in EUR as a price, net and gross return index on an end of day basis.

Delivery

- End of day index and security level files are available daily via FTP and vendor platforms.
- End of day index levels will be available via www.msribarra.com at a later date.
- Real time index levels are expected to be available via Bloomberg and Reuters shortly after index launch.

History

- Daily index level history from May 31, 2002 is available on client request.

Barra Value Factor

The Barra Value Factor aims to capture the extent to which a company's ongoing business is inexpensively priced in the marketplace. It is an important source of performance and also one of the most important sources of common factor risk.

Signals Used to Identify Value Are:

- Book to price
- Earnings to price
- Sales to price

MSCI Europe Value Tilt Index Methodology Highlights

Underlying index and security universe:	MSCI Europe Index
Optimization objective:	Maximize exposure to the factor while limiting tracking error to the underlying index, subject to specified constraints
Restrictions:	<ul style="list-style-type: none"> ▪ Country and industry exposure less than 5% difference from the underlying MSCI Europe Index ▪ Other style exposures less than 0.25 standard deviations to the underlying MSCI Europe Index ▪ Maximum 200 stocks ▪ Stock weights +/-2% of underlying MSCI Europe Index weight ▪ Monthly turnover <5% ▪ ADV trade limit <10%

About MSCI Barra

MSCI Barra is a leading provider of investment decision support tools to investment institutions worldwide. MSCI Barra products include indices and portfolio risk and performance analytics for use in managing equity, fixed income and multi-asset class portfolios. The company's flagship products are the MSCI International Equity Indices, which are estimated to have over USD 3 trillion benchmarked to them, and the Barra risk models and portfolio analytics, which cover 56 equity and 46 fixed income markets. MSCI Barra is headquartered in New York, with research and commercial offices around the world. Morgan Stanley, a global financial services firm, is the majority controlling shareholder of MSCI Barra.

The information contained herein (the "Information") may not be reproduced or disseminated in whole or in part without prior written permission from MSCI Barra. The Information may not be used to verify or correct other data, to create indices, risk models, or analytics, or in connection with issuing, offering, sponsoring, managing or marketing any securities, portfolios, financial products or other investment vehicles. Historical data and analysis should not be taken as an indication or guarantee of any future performance, analysis, forecast or prediction. None of the Information or MSCI index or other product or service constitutes an offer to buy or sell, or a promotion or recommendation of, any security, financial instrument or product or trading strategy. Further, none of the Information or MSCI index or other product or service is intended to constitute investment advice or a recommendation to make (or refrain from making) any kind of investment decision and may not be relied on as such. The information is provided "as is" and the user of the Information assumes the entire risk of any use it may make or permit to be made of the Information. NONE OF MSCI, BARRA, FEA, ANY OF THEIR AFFILIATES OR THEIR DIRECT OR INDIRECT SUPPLIERS OR ANY THIRD PARTY INVOLVED IN THE MAKING OR COMPILING OF THE INFORMATION (EACH, AN "MSCI BARRA PARTY") MAKES ANY WARRANTIES OR REPRESENTATIONS AND, TO THE MAXIMUM EXTENT PERMITTED BY LAW, EACH MSCI BARRA PARTY HEREBY EXPRESSLY DISCLAIMS ALL IMPLIED WARRANTIES, INCLUDING WARRANTIES OF MERCHANTABILITY AND FITNESS FOR A PARTICULAR PURPOSE. The foregoing shall not exclude or limit any liability that may not by applicable law be excluded or limited, including without limitation (as applicable), any liability to the other party for death or personal injury to the extent that such injury results from the negligence or wilful default of itself, its servants, agents or sub-contractors.